

Psychology



2025

A career in health...

is life- changing

Flinders University offers a range of future-focused health degrees that will allow you to follow your interest across a diverse range of areas such as: psychology, social work, medicine, nursing, health sciences, exercise science, disability, audiology, public health and more. Choose a degree that reflects your passions and graduate with the skills and knowledge to make a positive impact on the health industry now and into the future.

Flinders University acknowledges the Traditional Owners and Custodians of the lands on which its campuses are located. These are the Traditional Lands of the Arrernte, Dagoman, First Nations of the South East, First Peoples of the River Murray & Mallee region, Jawoyn, Kurna, Larrakia, Ngadjuri, Ngarrindjeri, Ramindjeri, Warumungu, Wardaman and Yolngu people. We honour their Elders past, present and emerging.



“There are so many things that inspire and excite me about the psychology industry! After my PhD, I aspire to work as a clinical psychologist in the corrections field. Perhaps I’m an idealist, but I’d like to help change the criminal justice system.”

Christiana Harous

Bachelor of Psychology (Honours) – graduated
2017 Doctor of Philosophy (Clinical Psychology)
– present

Psychology degrees

With a Flinders psychology degree, you'll gain the essential knowledge and skills required for further study to practise as a registered psychologist.

Find out everything you need to know about studying psychology at Flinders by scanning the QR code or visiting flinders.edu.au/psychology



Scan to find out more

Bachelor of Arts (Psychology Major)

Develop a range of transferable skills that are highly valued in a wide range of jobs and industries. You'll learn how to investigate and analyse ideas, communicate your findings and build your knowledge base in a variety of areas.

- Select one additional major from 25 disciplines and a minor from 30 disciplines.
- You'll be able to choose from majors unique to SA universities, including drama, law and society, archaeology, and innovation and enterprise. Your studies will help you develop as a thinker, researcher and communicator.
- Psychology major: Psychology is the study of human behaviour and experience, including how we learn and develop, personality and self-esteem, thinking processes and psychological problems.

Bachelor of Psychological Science

Undertake key subjects that will prepare you for a diverse range of careers, or to pursue further study to become a practising psychologist. This degree covers fields such as personality; emotion; development; social, cultural and biological influences; and mental health.

- Develop the essential knowledge and skills required for further study to practise as a registered psychologist.
- Enhance your career opportunities by combining your psychology degree with areas like outdoor education, mental health and wellbeing, or criminology.
- Learn from internationally renowned researchers on core topics like brain function, autism, trauma, social justice, sleep disorders, learning and memory, and eating disorders.

Bachelor of Psychological Studies (Graduate Entry)

This nationally-accredited psychology major is available to students who have already completed a degree in any discipline. This degree will enhance your understanding of human behaviour to pursue further studies in psychology.

- This degree prepares you for Honours in psychology and subsequent higher degree studies towards registration as a psychologist.
- You'll undertake practical experience that prepares you for the workforce, develop skills to critically evaluate psychological literature, and apply psychology knowledge to real-world problems.
- The degree provides the equivalent of a major in psychology for those who hold a degree in another discipline.

Bachelor of Psychology (Honours)

Follow your passions in this degree and graduate career-ready with high-level training in professional, practical and academic areas. With excellent facilities, including up to 20 research laboratories and unique placement opportunities, this degree will prepare you for work in clinical, educational, organisational or academic settings.

- Pursue the pathway to become a registered psychologist – this degree prepares you with the Honours-level training required for progression towards registration.
- Study in applied, social, clinical, neurological and developmental psychology.
- Undertake a placement in a psychological setting in third year.

Undergraduate Certificate in Mental Health and Wellbeing (Workplace and Community)

Gain the skills to implement mental health and wellbeing practices in workplaces and communities. Learn how to promote mental wellbeing, develop yourself, support those experiencing difficulties, and mitigate risk by designing for mentally healthy workplaces and communities.

- Gain formal, science-backed qualifications as your first step to a career for which there's growing demand.
- Learn from experts in positive, social, clinical and organisational psychology, about managing personal wellbeing, prevention of psychosocial hazards at work, supporting the mental health and wellbeing of others, and taking leadership for wellbeing within your community group or workplace.
- Participants finish with a Certificate, which provides a pathway into the Bachelor of Psychological Sciences.



Bedford Park



Flinders’ huge main campus features an award-winning hub and plaza, with retail, food outlets and a state-of-the-art sport and fitness centre.

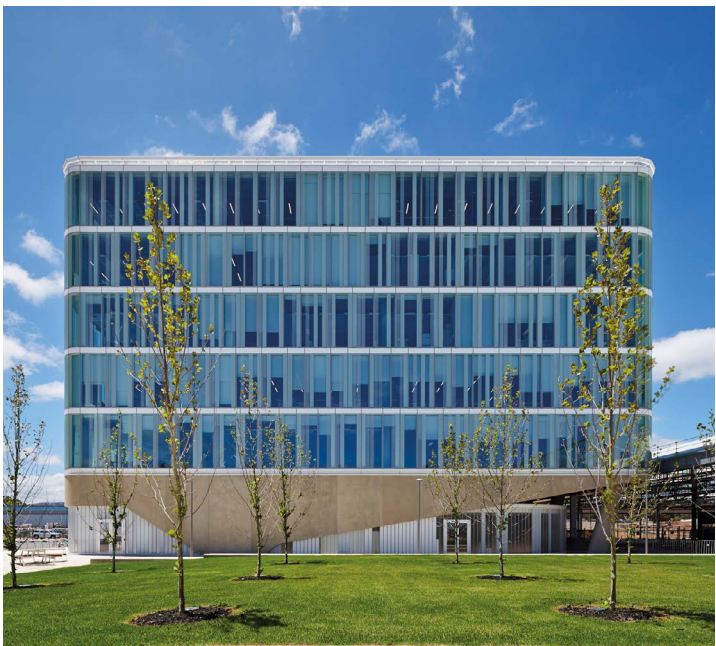
Our campuses

Flinders’ Adelaide campuses include our main Bedford Park campus and Flinders at Tonsley, which features close links to industry. Our stunning new city campus is situated at Festival Plaza on North Terrace, right beside the Adelaide Railway Station.

Take a virtual tour of Flinders University and explore our amazing locations.



Tonsley



Flinders at Tonsley is a place where our students interact with business, and where business interacts with our researchers in areas such as engineering, medical devices and nanoscale technologies.

Getting to Flinders

Flinders is well connected to Adelaide by bus and train. The Flinders Railway Line gets you from our new city campus to Tonsley in a super-fast 20 minutes, or to Bedford Park in just 22 minutes.

Explore all our transport options.



Flinders University’s cutting-edge, vertical campus offers a new way of learning in the heart of the city. Flinders’ city campus at Festival Plaza has been designed for flexibility, collaboration and immersion. Here, students will gain the knowledge and practical skills they need to confidently step into their careers.

Spanning eight levels, with multiple state-of-the-art teaching spaces, Flinders’ new city campus is designed for innovative and adaptable learning, catering to an extensive range of study programs. Every floor has dedicated spaces for students to come together, learn from industry experts and be inspired by a world of learning possibilities.



Applying to study

How to apply

Applying to study at Flinders is easy, but there are some steps you'll need to follow. Applicants need to apply through the South Australian Tertiary Admissions Centre (SATAC).

You'll find application dates and details at:

satac.edu.au

Before you apply

Visit the course page you're interested in via the QR codes in this brochure, or via flinders.edu.au/study to make sure you have all the information and admission criteria you need, such as prerequisites and assumed knowledge.

You may also want to explore alternative pathways to your degree or combined degrees.

After you've applied

Once you've received an offer to a course, visit

students.flinders.edu.au/my-course/enrolment to enrol in your subject/topics.

Fees and charges

As an undergraduate student your course is Commonwealth supported provided you're an eligible Australian citizen, New Zealand citizen or permanent resident. This means that your course fees are shared between the Australian government and you. You may then choose to apply for a HECS-HELP loan to pay your student contribution amount. Find out more at:

flinders.edu.au/fees

If you have any questions

Feel free to contact us via phone, email or through a one-on-one appointment. We're always happy to help.

flinders.edu.au/study/contact-us

Starting at Flinders

When can I start?

Flinders offers two admissions cycles each year for undergraduate degrees. Semester 1 starts in March. If you've decided to take a break from schooling, you may decide to start mid-year in Semester 2, which starts in July. Note that not all degrees offer a Semester 2 start, so check the relevant course page via:

flinders.edu.au/study

Applications for both Semester 1 and Semester 2 open the previous August.

Key dates

Semester 1 Orientation week: 24 February 2025

Semester 1 2025 start date: 3 March 2025

Semester 2 Orientation week: 21 July 2025

Semester 2 2025 start date: 28 July 2025

Student support

Student support at Flinders starts from well before you apply. Our Flinders Support and Services Directory (students.flinders.edu.au/support) covers:

- health and wellbeing
- study and learning
- financial support and assistance
- enrolment and course support
- admin and technology
- careers and employment
- security
- Indigenous student support

Our support team is on hand to answer any questions you might have via phone, email or 1-on-1 sessions. If you have any questions, contact us via:

flinders.edu.au/study/contact-us

Flinders Living

Flinders is the only university in Adelaide that gives you the opportunity to live on campus.

flinders.edu.au/living

Flinders University Student Association

The Flinders University Student Association (FUSA) continues a long tradition of active student involvement and represents the rights and interests of students.

fusa.edu.au

Yungkurinthe Student Engagement

Yungkurinthe Student Engagement provides a range of services and supports for Aboriginal and Torres Strait Islander students.

flinders.edu.au/study/indigenous-students

Glossary

There are many terms used within a university that may be unfamiliar or confusing. The link below contains a list of common university terminology.

students.flinders.edu.au/glossary

Flinders scholarships

Flinders offers a generous range of scholarships for students in undergraduate courses. With over 400 available scholarships, including scholarships to students from low socio-economic backgrounds, students from rural and regional areas, and Aboriginal and Torres Strait Islander students, you may be eligible for support that will help you achieve your goals at university.

flinders.edu.au/scholarships

Work Integrated Learning

Flinders' Work Integrated Learning (WIL) will improve your employability by helping you better understand the day-to-day skills employers are looking for, and by giving you the chance to gain real experience in a workplace environment directly related to the course you're studying.

You might take on a work placement or internship, gain hands-on experience through field education, or get involved in projects with industry or community organisations.

flinders.edu.au/WIL

Combined degrees

Explore your interests and unlock more career opportunities by combining degrees. Combining your degree with a qualification in another discipline will help you develop specialised abilities to stand out from the pack. Studying a combined degree at Flinders is the key to enhancing your career opportunities.

For a full list of combined degree options visit:

flinders.edu.au/combineddegrees

Admission Pathways

Whether you are a school leaver or returning to study at a later date, there are many ways to gain admission to Flinders University. Explore your options and find the entry path that's right for you.

flinders.edu.au/pathways

Year 12 entry

Most Year 12 applicants enter university via the traditional entry method, where offers are made to eligible applicants with the highest selection rank until all places in the degree are filled.

flinders.edu.au/year12

Guaranteed entry

If you achieve an ATAR equal to or above the published guaranteed entry selection rank (and you meet course prerequisites) you will be guaranteed a place at Flinders for most courses.

Year 12 Grades Entry Scheme

Upon SACE completion, by using three of your best Year 12 grades, you can gain a place in your course of choice. This is in addition to being considered on any other pathway for which you are eligible.

Indigenous Admission Scheme

The Indigenous Admission Scheme provides an alternative pathway for Aboriginal and Torres Strait Islander people. Visit:

flinders.edu.au/indigenousadmissions

Elite Athlete Pathway

If you've officially represented your school or state at a national level competition, we'll consider your school's recommendation about your academic potential when you apply.

flinders.edu.au/study/sport/elite-athletes

Research Project B Pathway

If you have strong results in the Research Project B subject you will be considered for entry into Flinders on the basis of your Year 12 results and Research Project B performance.

flinders.edu.au/study/pathways/year-12-entry/research-project

School Recommendation Program

We may consider your school's recommendation about your academic performance as part of your admission into Flinders.

uniTEST

If you're in Year 12, uniTEST is available to enhance your chances of getting into Flinders.

flinders.edu.au/unitest

If you haven't achieved the results you expected

If you haven't achieved the results you expected in Year 12, there are a number of pathways to your preferred degree. You can start studying one course and move to another via internal transfer or Flinderslink.

flinders.edu.au/study/pathways/flinderslink

Psychology degrees

For further information on entry requirements, pathways, career outcomes and more, scan the QR code or visit flinders.edu.au/psychology



Scan to find out more

Bachelor degrees	SATAC CODE (^ AT FESTIVAL PLAZA)	2024 SELECTION RANK	2024 GUARANTEED SELECTION RANK	YEARS FULL-TIME	DEFERRABLE	TAFELINK	PATHWAY DEGREES	ADDITIONAL ENTRY REQUIREMENTS
Psychological Science (online available)	224651, 284601^	60	75	3	Yes	Cert IV or above	Arts (214031), Diploma in Arts (216031)	None
Psychology (Honours)	214321	90	NA	4	Yes	NA	Psychological Science (224651, 284601^), Arts (214031), Diploma in Arts (216031)	None

Psychology

Contact us

Our friendly staff are available to answer your questions:

1300 354 633 (local call cost) | askflinders@flinders.edu.au | flinders.edu.au/ask

International students should contact:

+61 8 8201 2727 | flinders.edu.au/international | INTLAdmissions@flinders.edu.au

Every effort has been made to ensure the information in this brochure is accurate at the time of publication: May 2024. Flinders University reserves the right to alter any course or topic contained herein without prior notice. Alterations are reflected in the course information available on the University's website. CRICOS No. 00114A