

Research News

Dean of Research

Dear all,

It's been another busy month for the College Research Team. ARC Discovery Grants have now been submitted and NHMRC Investigator grants went in this week. I have also been kept busy with a stream of Research Now requests relating to other funding opportunities. Congratulations, to all involved, on the submission - fingers and toes are crossed for good outcomes!

For those of you that attended the College catch up last week with the Vice Chancellor, you will have heard that whilst the research performance of the University is on a steep upward trajectory, our College research income for 2022 was lower than we had hoped (~\$2.9million). This is partly to do with timing of the calendar year and when funding announcements are made but we also cannot afford to be complacent. The Vice Chancellor's comments underscore the need for us, as a College, to ensure that 2023 is a very successful year in terms of grant income. If you haven't already identified which grant you will apply for this year, please feel free to reach out to your Research Section Head for a chat (Teaching & Learning: A/Prof Shane Pill; Mind Body & Cognition: A/Prof Tim Windsor; Social Inquiry & Wellbeing: moi).

On that note, you will read in the newsletter the wonderful news that CEPSW Researchers Dr Stephanie Wong and Dr Monica Caitions have been awarded \$2 million from the Medical Research Future Fund to identify paths towards early diagnosis of dementia. This is a wonderful outcome for Stephanie and team on an incredibly important topic.

In other research news, the College Research Committee is establishing an Internal Peer Review Scheme for our Category 1 Grants and, to that end, I wrote to you all recently with a short survey. If you are an experienced campaigner with the Australian Research Council, NHMRC, MRFF or other Category 1 schemes, please do add your name to our panel or reach out to me if you have any queries/qualms about doing so.

Cheers,
Emma



S U C C E S S

Dr Stephanie Wong was awarded a **\$2million** grant from the **Medical Research Future Fund (MRFF) Dementia Ageing and Aged Care Mission** for the project titled *Spatial navigation assessment: Pathway to clinical translation and early diagnosis of dementia*.

The CI team includes Professor Michael Hornberger (University of East Anglia, UK), Dr Monica Cations, Professor Maria Crotty, Dr Ashleigh Smith (UniSA), Professor Frini Karayanidis (University of Newcastle), Professor Mark Jenkinson (University of Adelaide), Associate Professor Victor Schinazi (Bond University), Associate Professor Tobias Loetscher (UniSA), Professor Hannah Keage (UniSA), Dr Michelle Kelly (University of Newcastle). Partners include: Central Adelaide Local Health Network (CALHN), South Australian Local Health Network (SALHN), Northern Adelaide Local Health Network (NALHN), and the Australian Dementia Network.

Grant Synopsis

Early and accurate diagnosis of dementia is critical to delivering, and maximising the benefits, of targeted interventions and support strategies to slow disease progression and help people maintain independence and quality of life. In the case of Alzheimer's disease (AD), the focus of this project, current diagnostic neuropsychological tests are not sensitive enough to detect the progressive brain changes that begin 10-20 years before the onset of memory symptoms.

To address this, our multi-disciplinary team have developed innovative tests of spatial navigation (the cognitive processes that allow us to find our way around our environment) that are highly sensitive and specific to early AD pathology. In this project we will, firstly, validate a suite of these spatial navigation tests, using data linkage and large-scale testing and neuroimaging in well-established Australian cohorts of healthy adults and people with pre-clinical AD, mild cognitive impairment and early-to-moderate AD. Key outcomes from this validation phase will include: 1) normative data and clinical cut-off scores, 2) an online norming tool to guide clinical decision-making, and 3) validation of the neural signatures of spatial navigation impairments in pre-clinical AD, mild cognitive impairment and AD. Secondly, in partnership with routine clinical services, we will evaluate the suite of tests in an implementation trial, capturing data on effectiveness, feasibility and acceptability for future scale-up and wider rollout across Australia. Finally, via our partnerships and extensive professional networks, we will translate our findings into clinical training tools and national practice guidelines.

The outcome of the project is a more effective approach to early diagnosis of AD that can be rapidly introduced into clinical care pathways nationally. This will result in significant quality of life benefits for patients and their carers, as well as cost savings for the health system.

Spatial navigation assessment: pathway to clinical translation and early diagnosis of dementia



Medical Research
Future Fund



Associate Professor Helen McLaren, Dr Yunong Huang, and Dr Emi Patmisari were awarded a **\$63,768** grant from **Flourish Australia** to undertake a rigorous review of psychosocial supports for people with mental disability/psychiatric illness, living in the community.

Dr Michelle Jones, Marion Champion, and Associate Professor Helen McLaren were awarded **\$19,995** to co-design and test a multidisciplinary *Family Meetings Guideline* for **NALHN**.

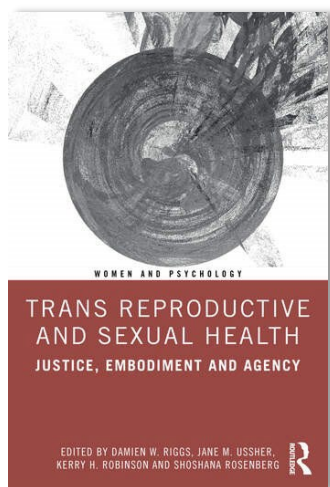


Associate Professor Helen Askeff-Williams, and first author Gloria Koh, on the paper *Sustainable school-improvement in complex adaptive systems: A scoping review*, were one of the top cited papers in the Review of Education (Wiley), January 2021- December 2022.

Associate Professor Shane Pill, together with first author Brendan Suesee, and co-authors Michael Davies and John Williams, received the **2022 Metzler-Freedman Exemplary Paper Award from the Journal of Teaching in Physical Education** for the paper *Getting the tip of the pen on the paper: How the spectrum of teaching styles narrows the gap between the hope and the happening*.

Professor Emma Thomas' Honour student, **Emily Haines**, has won the **Australian Psychological Society Psychologists for Peace Interest Project Award** for her Honours thesis. This is a very competitive national award for fourth year projects on research related to peaceful means of resolving conflict. Emily will receive \$500.

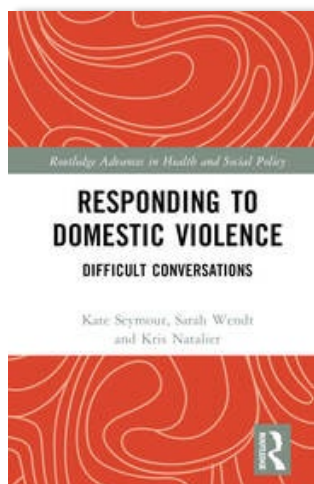
Books



Trans reproductive and sexual health: Justice, embodiment and agency

Editors: Professor Damien Riggs, Professor Jane M. Ussher, Professor Kerry H. Robinson, and Soshana Rosenberg.

Focusing on reproductive and sexual justice, this important book explores in detail both the challenges that trans people face when negotiating reproductive and sexual health in restrictive social contexts, and their agency in advocating for change. Chapters cover a breadth of topics such as intimacy, sexual violence, reproductive intentions, sexuality education, oncology, and pregnancy, introducing readers to the latest research in the field as well as key emerging concepts. The authors identify core principles for trans reproductive and sexual justice, providing a broad overview of what is currently succeeding and what can be built on going into the future. *Trans Reproductive and Sexual Health* offers a comprehensive exploration that is essential reading for academics and students in psychology, sociology, gender studies, and related areas, as well as clinicians and policy makers, offering direct implications for professional audiences working in health and social care.



Responding to domestic violence: Difficult conversations

Authors: Dr Kate Seymour, Professor Sarah Wendt & Associate Professor Kris Natalier

This book reflects on the problem of domestic violence by thinking critically about policy and practice responses. Moving beyond accounts of men's violence embedded in metaphors of 'good' and 'bad men', or as the expressions of particular structures and practices, it initiates challenging conversations concerning the ways in which our embeddedness in gendered discourses shapes the responses that we imagine are possible and desirable. Case studies ground the chapters, providing a focus for thinking through the dilemmas, challenges, and contested nature of ideas, meanings, and practices in this space. Rather than presenting easy answers, each chapter provides a forum for the exploration of ambiguity and complexity – to acknowledge the discomfort and sit with this, not to rush to resolve it. Situated within this contested, uncomfortable terrain, this book presents a small – but important – step towards a reimagining of the ways in which we think about and respond to domestic violence.

RESEARCH PUBLICATIONS



Books

Riggs, D.W., Ussher, J., Robinson, K., & Rosenberg, S. (Eds.) (2022). *Trans reproductive and sexual health: Justice, embodiment and agency*. Routledge.

Seymour, K., Wendt, S. & Natalier, K. (2023). *Responding to domestic violence: Difficult conversations*. Routledge (Routledge Advances in Health and Social Policy).

Book Chapters

Emery, C.R., Abdullah, A., Ho, R.T.H., & Islas-Madlo, S. (2023). Studying maltreatment through polyvictimization: A three-dimensional theoretical foundation. In: Martin, C., Preedy, V.R., Patel, V.B. (eds) *Handbook of Anger, Aggression, and Violence*. Springer, Cham. Doi: 10.1007/978-3-030-98711-4_3-1

Refereed Journal Articles

Agnew, D. & Pill, S. (2023). Creating caring environments: An exploration of football managers and coaching. *Sports Coaching Review*, 12(1), 27-46. Doi: 10.1080/21640629.2021.1896209

Balfour, D., Melton, P. E., McVeigh, J. A., Huang, R., Eastwood, P. R., Wanstall, S., Reynolds, A. C., & Cohen-Woods, S. (2023). Childhood sleep health and epigenetic age acceleration in late adolescence: cross-sectional and longitudinal analyses. *Acta Paediatrica*. Doi:10.1111/apa.16719

Brown, J.O., Chatburn, A., Wright, D.L., & Immink, M.A. (2023). A single session of mindfulness meditation expedites immediate motor memory consolidation to improve wakeful offline learning. *Journal of Motor Learning and Development*. Doi: 10.1123/jmld.2022-0016

Calabro, R., Kemp, E., Prichard, I., & Tiggemann, M. (2023). Vending machine backgrounds: Nudging healthier beverage choices. *Current Psychology*. Doi: 10.1007/s12144-023-04420-8

Dix, M., Wilson, C., Flight, I., Wassie, M. M., Young, G. P., Cock, C., Cohen-Woods, S., & Symonds, E. L. (2022). Patient attitudes towards changes in colorectal cancer surveillance: An application of the Health Belief Model. *European Journal of Cancer Care*, 31(6). Doi: 10.1111/ecc.13713

Emery, C.R., Abdullah, A., & Jordan, L. (2023). Protective community norms and mental health risks for severe physical abuse: Lessons from a nationally representative study of Ghana. *Journal of Interpersonal Violence*, 1-26. Doi: 10.1177/08862605231156418

Koh, G.A., Askill-Williams, H., & Barr, S. (2023). Sustaining school improvement initiatives: Advice from educational leaders. *School Effectiveness and School Improvement*. Doi: 10.1080/09243453.2023.2190130

Koh, G. A., & Askill-Williams, H. (2021). Sustainable school-improvement in complex adaptive systems: A scoping review. *Review of Education*, 9(1), 281-314. Doi: 10.1002/rev3.3246

Lawn, S., Waddell, E., Ridders, W., Roberts, L., Beks, T., Lawrence, D., Rioseco, P., Sharp, T., Wadham, B., Daraganova, G., & Van Hooff, M. (2022). Families' experiences of supporting Australian veterans and emergency service first responders (ESFRs) to seek help for mental health problems. *Health and Social Care*, 30(6), e4522-e4534. Doi: 10.1111/hsc.13856

Patmisari, E., McLaren, H., & Jones, M. (2023). Socio-developmental network analysis: Establishing a research method to examine socio-contextual dynamics of children in the Mockingbird Family™. *Social Sciences*, 12(3):129. Doi: 10.3390/socsci12030129.

Petersen, J., Drummond, M., Crossman, S., Elliott, S., Drummond, C., & Prichard, I. (2023). Mental health promotion in youth sporting clubs: Predictors of stakeholder participation. *BMC Public Health*, 23. Doi: 10.1186/s12889-023-15377-5.

Pill, S., Agnew, D., & Abery, L. (2023). Coaches' perceptions of their work in an elite youth sport setting. *The Journal of Sport and Exercise Science*, 7, (1), 12-20. Doi: 10.36905/jses.2023.01.02

Russell, A., Jansen, E., Burnett, A.J., Lee, J., & Russell, C. G. (2023). Children's eating behaviours and related constructs: Conceptual and theoretical foundations and their implications. *International Journal of Behavioral Nutrition and Physical Activity*. Doi: 10.1186/s12966-023-01407-3

Wilkop, M., Wade, T., Keegan, E., & Cohen-Woods, S. (2023). Impairments among DSM-5 eating disorders: A systematic review and multilevel meta-analysis. *Clinical Psychology Review*, 102267. Doi: 10.1016/j.cpr.2023.102267

Wilksch, S.M. (2023). Toward a more comprehensive understanding and support of parents with a child experiencing an eating disorder. *International Journal of Eating Disorders*. 10.1002/eat.23938

RESEARCH PUBLICATIONS

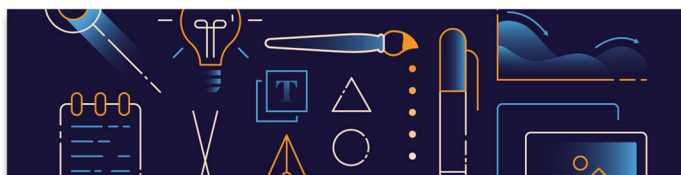


Reports

Working group of the National COVID-19 Health and Research Advisory Committee (2020). *Emerging issues in psychological distress/anxiety as a consequence of measures put in place to control the spread of COVID-19*: Ms Georgie Harman (Chair); Professor Fran Baum AO; Associate Professor Lorna Hallahan; Ms Christine Morgan; Professor Ingrid Scheffer AO: source-work-id: 88048750-a037-4d36-82e4-9d7bc0344d74

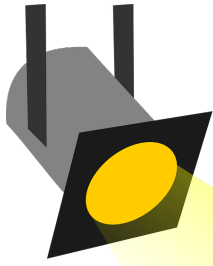
Working group of the National COVID-19 Health and Research Advisory Committee (2021). *Advice 27: Rapid review on the impact of COVID-19 on people with disability*; Associate Professor Lorna Hallahan (Chair), with input from external experts: Dr Jacqueline Small (Developmental Paediatrician, Sydney), Professor Gwynnyth Llewellyn (University of Sydney), Professor Anne Kavanagh (University of Melbourne) and Professor Julian Trollor (UNSW). source-work-id: 82b645b2-ca20-4a38-97f2-1aafc440871a

Skrzypiec, G., & Butler, L. (2023). LifeChanger Evaluation, CEPSW, Flinders University.



Presentations

- Bill, A., & Howard, N. (2022). Led a symposium at AARE on the topic *Pushed out of the system – Critical participatory Action Research (CPAR) tackling schooling injustice*. Co-presented with Principals Andrew Plastow (Ngutu College) and Kelly Bunyon (Compass Catholic Community College). The symposium considered the changing South Australian ecosystem in relation to schooling exclusion. We focused on CPAR and what constitutes our work as activist researchers, arguing that current neoliberal ideological dominance in education policy and practice calls for more publicly visible and interventionist research methodologies in partnership with teachers and school leaders to expose policy failings.
- Beatty, L. (2023). Finding My Way-Advanced: A pilot evaluation of a self-directed online psychosocial intervention in improving fear of cancer progression, distress and QOL in metastatic breast cancer. Cancer Survivorship Conference, Adelaide, March 9-10.
- Drummond, M. (2023). International Women's day presentation on Women, Girls and Sport. The Office of Recreation, Sport and Racing, 8 March.
- Elliott, S. (2023). Presentation: The Psychology of Goalkicking workshop February 27, 2023, (The Studio), attended by approximately 50 AFL, SANFL, Amateur coaches and students.
- Lawson, M. J. (2022). The representation of knowledge of self-regulation of learning and its use by teachers and students. Paper presented at the Annual Conference of the Australian Association for Research in Education, Adelaide, December.
- Nixon, R.D.V., Elizabeth, M., Wild, J., Fassnacht, D., & van Agteren, J. (March, 2023). *Protecting Emergency Responders with Evidence-Based Interventions (PEREI)*. 2023 Frontline Mental Health Conference, Gold Coast, Australia.
- Pfeffer, C.A., Hines, S., Pearce, R., Riggs, D.W., White, F.R. (2023). Transgender and gender-nonconforming pregnancy and the importance to social and healthcare worker support and education. Society for Social Work and Research Conference, Phoenix Arizona, January 15.
- Pill, S. Keynote 12/02 and workshops 11-12/03/2023 PHASE Global 2023 annual conference, UWC Thailand, Phuket
- Pill, S. 5/03/2023 and 19/03/2023 SANFL Level 2 AFL Coaching Course: Skill acquisition
- Pill, S. 22/03/2023 Port Adelaide Football Club: Game based coaching presentation
- Riggs, D.W. (2023). Supporting trans young people in schools. Invited presentation to St Peters Woodlands, January 23.



Dr Loretta Bowshall-Freeman

Spotlight Series: ECR and Mid-Career Researchers

With the aim of raising awareness of the amazing early- and mid-career researchers within our College, we will be profiling and sharing the successes of a different ECR/MCR each month. It is my pleasure to introduce to you Dr Loretta Bowshall-Freeman!!

Dr Ryan Balzan, ECR College Representative

When did you come to Flinders and what is your current role within the College?

I commenced at Flinders on 4 October 2022. My role at the *College of Education, Psychology and Social Work* is Lecturer in Education (Initial Teacher Education).

Can you briefly describe the work/research journey that took you to this point in your career?

I have been a Reception to Year 12 Classroom Teacher, Music specialist, and mentor for initial teacher education (ITE) pre-service teachers in Public, Catholic, and Independent schools for over twenty years. During my time mentoring ITE pre-service teachers, I identified areas for research. My research interests focus on ITE, with particular reference to the professional experience placement and education policy, as well as mentoring and supervision, education assessment and evaluation, teacher professional development, and leadership in education.

What was your favourite part of being a lecturer/postdoc and what was the hardest part of being a lecturer/postdoc?

I thoroughly enjoy the professional collaborative opportunities in lecturing and supervising research. I have not yet discovered the hardest part of these opportunities. I enjoy the roles so very much!

What is something you are most proud of?

Playing an important role in preparing our next generation of teachers and researchers in education.

What are your future ambitions?

There are many! However, at the front of my mind is the aim for future large-scale collaborative research projects, continuing to have an active role in supervising post graduate researchers, continuing to play an important role in preparing pre-service teachers for the teaching profession, and completing submissions for publications.

How do you like to relax or spend your spare time?

I enjoy spending time with family, engaging with music, creating dessert dishes (highly recommend the KitchenAid) and training my pets: Atticus, Mr Darcy, Cosette, and Esmé.



& Professional Services

- Bianco-Miotto, T., Llamas, B., & Cohen-Woods, S. (2023). Presentation on *Nutrition Epigenetics* at Science in the Pub, Adelaide Irish Club.
- Sarah Cohen-Woods has been elected co-Chair for the Australian Brain Alliance and now sits on the executive for the International Brian Initiative.
- Elliot, S. (2023). Will present Keynote at the AFL Gather Round at Adelaide Oval (April 13-16). Sam will discuss the future of AFL football in local communities.
- Elliott, S. (2023). Will present on youth sport, parenting and club culture development with five LGA councils including Salisbury Tea Tree Gully, Port Adelaide Enfield, Playford, Prospect, and Adelaide Plains, May 29.
- Pill, S. 15/03/2023 Meeting with NSW Premier's Teaching Scholarship Award recipient, Ross Montague
- Pill, S. 17/03/2023 Invited lecture, Fiji National University: *Investigating the Fundamentals of Training and Coaching being used nationally, regionally and internationally by providing an Australian perspective on game-based approaches to sport coaching*
- Pill, S. 23/03/2023 Secondary curriculum unit planning consultancy with the Department for Education
- Lydia Woodyatt presented a series of leadership training workshops to Westpac Banking Group, developing a psychological needs approach for staff who support customers with Cost of Living Pressures (Adelaide, March 29th and 30th, 2023) and supporting senior leaders with a needs-based approach to managing high performing teams, particularly with remote workforces (online, across Sydney and Adelaide, March 16th, 2023).



The Royal Commission into Defence and Veteran Suicide: Reform of Veteran Entitlement Acts

Professor Ben Wadham has been invited to sit on a national 10 expert panel to oversee the reform of veteran entitlement acts by the Department of Veterans Affairs. In August 2022 the Royal Commission into Defence and Veteran Suicide released its [Interim Report](#) making 13 recommendations. The Report confirmed that veterans' legislation is complex and difficult. Recommendation 1 states that: *The Australian Government should develop and implement legislation to simplify and harmonise the framework for veterans' compensation, rehabilitation and other entitlements.* The Government agreed to Recommendation 1 and stated that: *The Government will develop a pathway for simplification and harmonisation of veteran compensation and rehabilitation legislation on the basis of this recommendation, noting that funding will be considered in the context of budget processes and fiscal constraints.* The timing of implementation will be informed by what is required for necessary consultation and the passage of legislation. On 16 February 2023, the Minister for Veterans' Affairs [announced the commencement of consultation on a legislation pathway](#) that has been developed by Government.

Community and Professional Service

- Professor Wadham has been asked to provide advice on military sexual assault and the use of rape crisis centres by veterans who have survived sexual assault to the Royal Commission into Defence and Veteran Suicide.
- Professor Ben Wadham was asked to consult with the Royal Commission on military institutional abuse, military justice reform and military sexual assault as part of the Royal Commissions investigations – March 16 2023

IN THE CONVERSATION

Cardell, K., Harous, C., Maquire, E., & Woodyatt, L. (2023). How can publishers support the authors of trauma memoirs, as they unpack their pain for the public? [The Conversation](#), 16 February 2022.

Howards, N., & Bills, A. (2023). School attendance rates are dropping. We need to ask the students why. [The Conversation](#), 27 February 2023.

Russell, G., & Russell, A. (2023). Your tendency to overindulge these holidays could relate to your 'eating personality'. Which type are you? [The Conversation](#), 16 December 2022.



Introducing new Institute Manager: Kirsty de Ruyter

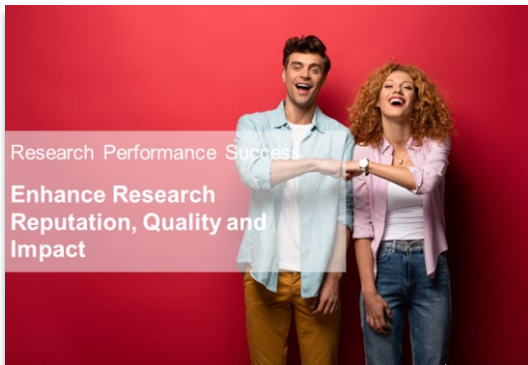
I am delighted to start my new role as Manager of Flinders Institute for Mental Health and Wellbeing. I have spent the last five years at Flinders working in Research Development and Support in the Training, Development and Communication team and have enjoyed engaging with the Flinders research community through the sessions and events that we have run. Prior to joining Flinders, I held various positions in community and student engagement, marketing, account management and high-level administration across a variety of industries, both in Australia and overseas. I hope to use this experience and knowledge to support the Institute's vision of improving mental health and wellbeing.



Over the coming weeks I look forward to getting to know as many of the Institute members as possible so please don't hesitate to drop me a line if I can be of any assistance. My office is located in SSN360 and my phone number is 8201 3968.

Inaugural Public Lecture: Child and Adolescent Mental Health and Wellbeing – 16th March 2023, SAHRMI 5-8pm

The Institute hosted its first public lecture as the Flinders University Institute for Mental Health and Wellbeing on the 16th March at the SAHRMI Building, North Terrace from 5-8pm. The Keynote was given by Professor Jennie Hudson, Director Research at the Black Dog Institute and John Mannion from Breakthrough will MC the event. Institute Director Tracey Wade, along with Institute members Sam Elliott, Grace Skrzypiec and Jessica Paterson, discussed issues raised in Jennie's presentation in a Q&A panel session.



ResearchNow usability and support

The **Research Performance Success** team in IDS Research Engagement and Success are leading a project exploring the challenges you may face in your research journey.

We are conducting a short **3-5 minute survey** to help improve the usability and support of ResearchNow. Your response to the survey will help us to provide a better experience.

https://qualtrics.flinders.edu.au/jfe/form/SV_0e20tfQfkNfAEPc

The more response we receive – the better the improvements will be!

Internal Panel for Cat 1 Schemes: Survey

Many CEPSW researchers have had experience with Cat 1 and 2 schemes, however there is no mechanism for sharing these learnings with our colleagues. Feedback from CEPSW colleagues with Cat 1 experience could be invaluable in developing the frame/pitch, refining the application and addressing known funder preferences. This panel would not replace review by external parties (e.g., consultants) nor would it replace the review provided by colleagues in Research Development and Support. It could, however, become an important way of benefiting from our collective expertise.

To that end, we are looking to find out about researchers' expertise in the Cat 1 environment, and would appreciate you taking a 2 minute survey: [LINK HERE](#)

SHAPE

Sport, Health, Activity, Performance and Exercise Research Centre

Celebrating Women in Sport on International Women's Day



SHAPE's Director Professor Murray Drummond was invited to speak at the Office for Recreation, Sport and Racing (ORSR) *International Women's Day* event. ORSR hosted a panel discussion to celebrate women in sport and to highlight the inequalities that inhibits girls and women from actively and equally participating in sport.

The panel included Dr Amber Halliday OLY – dual Olympic rower, three-time world champion, former world record holder, former cyclist, Doctor of Psychology and a member of the Women in Sport Taskforce, and Kalinda Robinson – SASI sprint cyclist and AIS Thrive with Pride Ambassador.

SHAPE to host National Youth Sport Conference 2023

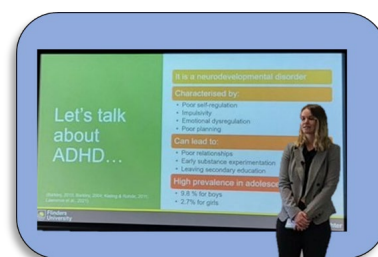
The **National Youth Sport Conference** (November 16-17, 2023) will be held at the Tonsley Campus, Adelaide, Australia. The inaugural **National Youth Sport Conference** is a comprehensive two-day program for academic researchers, Higher Degree Research students, industry organisations and government delegates to exchange new knowledge and enhance youth sport's developmental, social, political, psychological and performative dimensions. Our conference theme is 'Increasing benefits and decreasing risks'.

Abstracts and **registrations** are open so don't miss this opportunity to be a part of the first National Youth Sport Conference on home soil.



HDR News

Congratulations to **Madison (Maddie) Richter** for successful completion of her Confirmation of Candidature in February for her PhD project entitled **Supporting cognition in adolescent ADHD through motor learning**. Through consultation with adolescents diagnosed with ADHD, Maddie will co-design and evaluate a serious video game that utilises motor learning processes to improve higher-order cognition. Maddie is a PhD candidate in the College of Nursing and Health Sciences under supervision by Associate Professors Maarten A Immink and Sam Elliott.



Visiting Researcher: Dr Sabrina Sghirripa



Dr Sabrina Sghirripa, Human Performance Scientist at Defence Science & Technology Group is a visiting researcher to work with Associate Professor Maarten A Immink on a project entitled **Neuroscience-Based Approaches To Assessing And Enhancing Human Cognitive Performance** with funding from the Defence Innovation Partnership Collaborative Research Fund awarded to A/Prof Immink in partnership with the University of South Australia, Lumination and Defence Science and Technology Group. Sabrina completed her PhD degree at the University of Adelaide in human cognitive neurophysiology. She is experienced in EEG methodology and analysis and is an avid tennis player.

Beyond the Club Podcast

Check out the latest episodes of SHAPE'S Beyond the Club podcasts:

- Episode 19: [Abuse in Sport](#)
- Episode 20: [Top free apps for sporting clubs](#)



Social Work Innovation Research Living Space



Grants and Funding

SWIRLS has been successful in their bid for a Cat 2 grant for **\$80,000** to work with the **Department for Education** on the project *An evaluation of the pilot of the YERTA (Young People Empowered to Re-engage towards Achievement) service for Aboriginal families with children and young people experiencing concerning levels of non-attendance at school.*

Spotlights

Centre of Excellence Meeting

Professor Sarah Wendt attended a meeting and event with fellow Chief Investigators for the ARC Centre of Excellence for The Elimination of Violence Against Women in Melbourne on Monday, March 6, coinciding with International Women's Day/week. It was amazing to meet a team of passionate partners and researchers and to share the collective research expertise through a Twitter Campaign to begin building the new Centre profile as a team.

International Women's Day Breakfast



On invitation from Her Excellency the Honourable Frances Adamson AC, Governor of South Australia, and Mr Rod Bunten, Sarah Wendt attended a breakfast on Wednesday, 8 March to celebrate International Women's Day. The theme was #EmbraceEquity – Equity isn't just a nice-to-have, it's a must-have. A focus on gender equity needs to be part of every society's DNA.

SWIRLS '2023 in Focus'

SWIRLS gathered for the 2023 'In Focus' brainstorm meeting to reflect on 2022 achievements and set priorities for 2023. Attended by Simon Brennan, Chief Research Development Officer, Research Development and Support and Emma Thomas, CEPSPW Dean Research for a highly productive day which built on SWIRLS research environment, supporting members to achieve success.

New Members

SWIRLS welcomes Dr Monique Mulholland (Associate Member) and Natalie Parmenter (PhD Student Member)

Publications: Book Launch

Responding to Domestic Violence : Difficult conversations by Kate Seymour, Sarah Wendt and Kris Natalier has been launched. This book moves beyond accounts of men's violence embedded in metaphors of 'good' and 'bad men', or as the expressions of particular structures and practices, it initiates challenging conversations concerning ways in which our embeddedness in gendered discourses shapes the responses we imagine are possible and desirable.

Presentations

Professor Sarah Wendt and Dr Josephine Clarke presented on the research project *Religion and domestic violence: exploring men's perpetration* at Australian Lutheran College's Festival of Learning, 23 February 2023 (online).

In the Media

Professor Gerry Redmond was on ABC Radio Canberra on the activities underprivileged children are missing out on – 28 February.

Professor Sally Robinson provided expert insight into the royal commission into violence and neglect for people with disability in #Hashtag, from The Conversation, 22 March.

Awards and Prizes

Catherine Helen Spence Scholarship

Tessa Cunningham, SWIRLS PhD student member, received the **2022 Catherine Helen Spence Scholarship**. Tessa joins a select group of women who have been offered the scholarship and is the 21st woman to receive it since it was established in 1911. The Committee strongly endorsed Tessa's research project that it is not only in keeping with the work of Catherine Helen Spence but will investigate an important issue and make a valuable contribution in South Australia.





19 March 2023. The Guardian Australia Edition. *'Don't bother': Fewer than five same-sex couples in Victoria approved for adoption since 2017*, featuring comments by Professor Damien Riggs on the decline being a combination of factors including the availability of contraception and abortion, the end of forced adoption practices and improved child protection systems. Also featured in VPEXplorer; Yahoo! News UK & Ireland.

13 March 2023. ABC Behind the News. Feature on the traditional Kurna game of Parndo in conversation with Associate Professor Shane Pill.

10 March 2023. 2SER 107.3FM. Interview with Dr Nigel Howard discussing the issue of the decrease in school attendance levels since 2016

10 March 2023. Channel 10. Social media trigger warnings designed to stop users from viewing harmful material could be having the opposite effect, featuring research by Professor Melanie Takarangi and Dr Victoria Bridgland.

6 March 2023. News.com.au. *Nominees in The Advertiser, Sunday Mail and SkyCity's 2023 Woman of the Year Awards*, featured Professor Tracey Wade as nominee for OCPSE Leader of the Year for her expert work in the field of eating disorders.

6 March 2023. HelloCare; Aged Health. *Research finds alarming number of older Australians die by suicide*, featuring Dr Monica Cations comments on right resourcing needed to aged care services as well as mental health and suicide prevention resources.

5 March 2023. 5AA. Interview with Professor Murray Drummond on volunteering in sporting clubs.

5 March 2023. Sunday Mail. Switch off phones, turn on learning, featuring Dr Grace Skrzypiec.

4 March 2023. The Advertiser, and associated media. *Volunteering in sporting clubs*, featuring Professor Murray Drummond comments about the need for volunteers in sport.

4 March 2023. The Daily Telegraph, The Advertiser, and associated media. *New Flinders university study reveals the shocking number of older Australians dying by suicide*, featuring comments by Dr Monica Cations on the need to take this risk seriously as we have older people who are really vulnerable and falling through the cracks.

28 February 2023. ABC Radio Adelaide. Continuing coverage on Dr Nigel Howard and Dr Andrew Bills' in The Conversation article *School attendance rates are dropping: We need to ask students why*.

27 February 2023. Heraldglobe.com; Big News Network; Vietnam News; Indianapolis Post, and associated media outlets. *School attendance rates are dropping. We need to ask students why*. Reprint of The Conversation article by Dr Nigel Howard and Dr Andrew Bills.

27 February 2023. Interview with Dr Nigel Howard discussing the issue of the decrease in school attendance levels since 2016.

27 February 2023. ABC Radio Adelaide. Interview with Associate Professor Shane Pill discussing St Peter's College's introduction to the traditional Aboriginal game Parndo.

26 February 2023. The Advertiser. *Elite Adelaide private school St Peter's College introduces traditional Aboriginal game*, featuring Associate Professor Shane Pill.

23 February 2023. ABC Central West NSW. Interview with Emeritus Professor John Halsey regarding NAPLAN tests and students in regional and remote areas are getting left behind.

22 February 2023. ABC Radio Sydney. Professor Eva Kempas was interviewed about research conducted together with Marika Tiggemann, Michaela Cibich and Aleksandra Cabala on the psychological drivers of energy drink consumption.



The Mind, Body and Cognition Colloquium Series, S1, 2023

All Sessions will be held Mondays 3pm in North Theatre 4

Date	Presentation
March 27	<p>Professor Neil Brewer <i>Confused of Bedford Park – is autism all the things it's supposed to be?</i></p>
April 3	<p>Psychology discipline meeting</p>
April 24	<p>No colloquium this week (ANZAC day Tuesday)</p>
May 1	<p>Psychology discipline meeting</p>
May 8	<p>Christina Galanis <i>Stigma in relation to behavioural addictions: Concept, processes and predictors</i></p> <p>Bohua Zhang <i>TBC</i></p>
May 15	<p>Isabella Anderberg <i>Step counts and calories: Associations among diet and fitness app use, body image, disordered eating and compulsive exercise</i></p> <p>Weiyang Xiong <i>The mental health and wellbeing outcomes of domestic and international tertiary students: Findings from systematic review and meta-analysis</i></p>
May 22	<p>Dr Serena Bauducco <i>Adolescents' sleep</i></p>
May 29	<p>Xin Luo <i>Attentional biases in different mental states</i></p> <p>Indira Carey <i>The interrelationships between movement, music and mood</i></p>
June 19	<p>Professor Helen Fung <i>Improving age-related performance by making it more meaningful</i></p>



Higher Degree by Research

CEPSW HDR UNSUPERVISED EVENTS



Theme: Getting and Balancing Casual Work

Date: 6th April 2023

Time: 3pm until 5pm

Location: Multimedia Room, The Hub, Level 1 – then the Tavern

Please join us for our catch up and discussion on **Getting and Balancing Casual Work at Flinders** – for HDR Students, new and old, on the first Thursday of April 2023 – Multimedia Room in The Hub.

This is the third of our “**First Thursday each Month**” engagements with CEPSW HDR Students, planned for 2023. On the next page you’ll find the proposed schedule for 2023. Please keep a look out for our meeting requests, which will be sent in due course. We also expect additional activity may be added during the year.

Who will be there? CEPSW HDR Students –HDR Student Committee members.

CEPSW HDR Coordinator

Associate Professor Helen McLaren, College of Education, Psychology and Social Work
Telephone: Office +61 8 8201 3025 | <http://www.flinders.edu.au/people/helen.mclaren>

CEPSW HDR Contacts

A warm welcome to our newest committee member **Glen Fernandes!** A reminder that if you have any concerns or questions that you might not feel comfortable asking your supervisor, please get in touch with any of the committee members and we will help you as best we can or point you in the right direction.

Student Committee: epsw-hdr-sc@FLINDERS.onmicrosoft.com

Education: catherine.litchfield@flinders.edu.au; glen.fernandes@flinders.edu.au

Psychology: georgina.maddox@flinders.edu.au (Chair); lucy.bird@flinders.edu.au; sam.antoniades@flinders.edu.au; david.nicoll@flinders.edu.au

Social Work: tess.cunningham@flinders.edu.au

Link to CEPSW HDR FLO page: <https://flo.flinders.edu.au/course/view.php?id=56481>

Twitter: <https://twitter.com/EPSWHDR>

HDR Completions

Congratulations to **Natasha Wood**, supervised by Associate Professor Sarah Cohen-Woods, Professor Tracey Wade and Dr Alex O'Donnell (Utas), who completed with the thesis, “*Scars of childhood stress: An investigation of the relationship between childhood socioeconomic position, DNA methylation, and young adult mental health*”.

HDR Spotlight

This month we'll hear from one of our PhD student on their HDR journey so far: David Nicoll.

HDR Spotlight on David Nicoll

Psychology PhD Candidate, HDR Student Committee member



What is the overview of your PhD?

I am in the final six months of a PhD investigating possible attentional errors when people use augmented reality during visual searches. The project is funded by a Human Performance Research contract (HPRnet) which gives it a defence focus, but any findings will apply to other contexts, such as surgical procedures.

What is something that you have enjoyed during your PhD?

Early in my PhD, I took up the opportunity to do a five-month paid internship with Defence Science and Technology. The internship was an invaluable experience and provided insight into how industry-driven research projects and collaborations operate. I believe the internship increased my skills in areas such as data analysis, progress reporting and presenting results.

What has been the biggest challenge?

As a (very) mature age student, the primary struggles were balancing the effort needed for the PhD with family commitments. At times, intense family commitments made it impossible to engage with my PhD as much as I needed to.

Why should people come along to the HDR Unsupervised events on the 1st Thursday of every month?

Doing a PhD can be a very lonely experience if you let it be. It is easy to stick your head in a computer and miss out on the support and friendships available. If you can get to campus then do that, if you must be remote then join online. Also, this year you get a free keep-cup!

HDR 2023 Program of Events

Date	What's on	Who's there	Where? <i>Subject to change, check your emails</i>	Unsupervised?
6 th Apr	Getting and balancing casual work at Flinders	HDR Students	Media Room in the Hub 3-4pm, then Tavern	
4 th May	Introducing the PhD Mentorship Program	HDR Coordinator and HDR Students	Media Room in the Hub 3-4pm, then Tavern	
1 st Jun	Q&A with peers on Confirmation of Candidature	HDR Students	Media Room in the Hub 3-4pm, then Tavern	
6 th Jul	Q&A with researchers on Research Groups & Research Culture	CEPSW Research Institute/ Centre members & HDR students	Media Room in the Hub 3-4pm, then Tavern	
3 rd Aug	Q&A on Mid-Candidature Review	HDR Students	Media Room in the Hub 3-4pm, then Tavern	
7 th Sept	Q&A on presenting at Conferences	Seasoned Academics, HDR Coordinator & HDR Students	Media Room in the Hub 3-4pm, then Tavern	
5 th Oct	Q&A on Final Thesis submission	HDR students	Media Room in the Hub 3-4pm, then Tavern	
2 nd Nov	Annual HDR Student Conference	Academics, HDR Coordinator, HDR Students	Venue TBA All day event	
7 th Dec	HDR & FIMWELL joint X-mas catch up	Members of FIMWELL & HDR Students	Media Room in the Hub 3-4pm, then Tavern	

Research⁷ Link

for funding searches



Public Lecture with Visiting Research Fellow

Professor Elizabeth Peel

(Loughborough University, UK)

Wednesday 5th April, 6.00pm | Level 2, 182 Victoria Square

Canine Companions and Social Interaction: Barking up the right tree for health and wellbeing



Do animal companions support human mental and physical well-being? In this Public Lecture Professor Peel discusses this question in light of the pandemic, focusing on how dogs help humans connect with other humans. Drawing on the 'Dog Talking and Walking Project', this lecture will focus on the so called 'pet effect'. It asks us to consider what are the subtleties of dog facilitated social interaction? What do people value about it? And when can connections catalysed by dogs be damaging for people, and conflict occurs? Professor Peel will present examples from her British research that illuminates how the 'pet effect' works with strangers, and how people can be supported to be more sociable. Maintaining social interaction is particularly important for some vulnerable groups such as people living with dementia. This lecture will explore how dogs may be especially enabling for people living with dementia, both as companions and as meditators of interactions between humans.

To register please email Professor Damien Riggs by 1st April 2023: damien.riggs@flinders.edu.au

Elizabeth Peel is Professor of Communication and Social Interaction at Loughborough University and was Associate Pro Vice Chancellor for the Doctoral College 2018-2022. She is a Fellow of the British Psychological Society. They have published widely in critical social and health psychology and have recently completed the ESRC-funded *Future of Legal Gender* project. She is on the Editorial Board of four journals and is Book Series Co- Editor of *Gender and Sexualities in Psychology* (Routledge). She is currently conducting the *Dog Talking and Walking Project*, learn more at www.wellbeingdog.wordpress.com