

# EVACUATION DIAGRAM

## 182 VICTORIA SQUARE

ON BEING WARNED BY  
BEEP-BEEP  
"STANDBY"

CEASE INTER &  
ACROSS FLOOR  
MOVEMENT

SECURE CLASSIFIED  
MATERIAL

AWAIT FURTHER  
INSTRUCTIONS

ON BEING WARNED BY  
WHOOOP-WHOOOP  
"EVACUATE"








PROCEED VIA THE  
SAFEST ROUTE TO  
THE ASSEMBLY AREA

ASSIST PERSONS WITH  
DISABILITIES AS  
NECESSARY

DO NOT RE-ENTER  
THE BUILDING UNTIL  
INSTRUCTED BY  
AUTHORITIES TO DO SO

### FIRST FLOOR

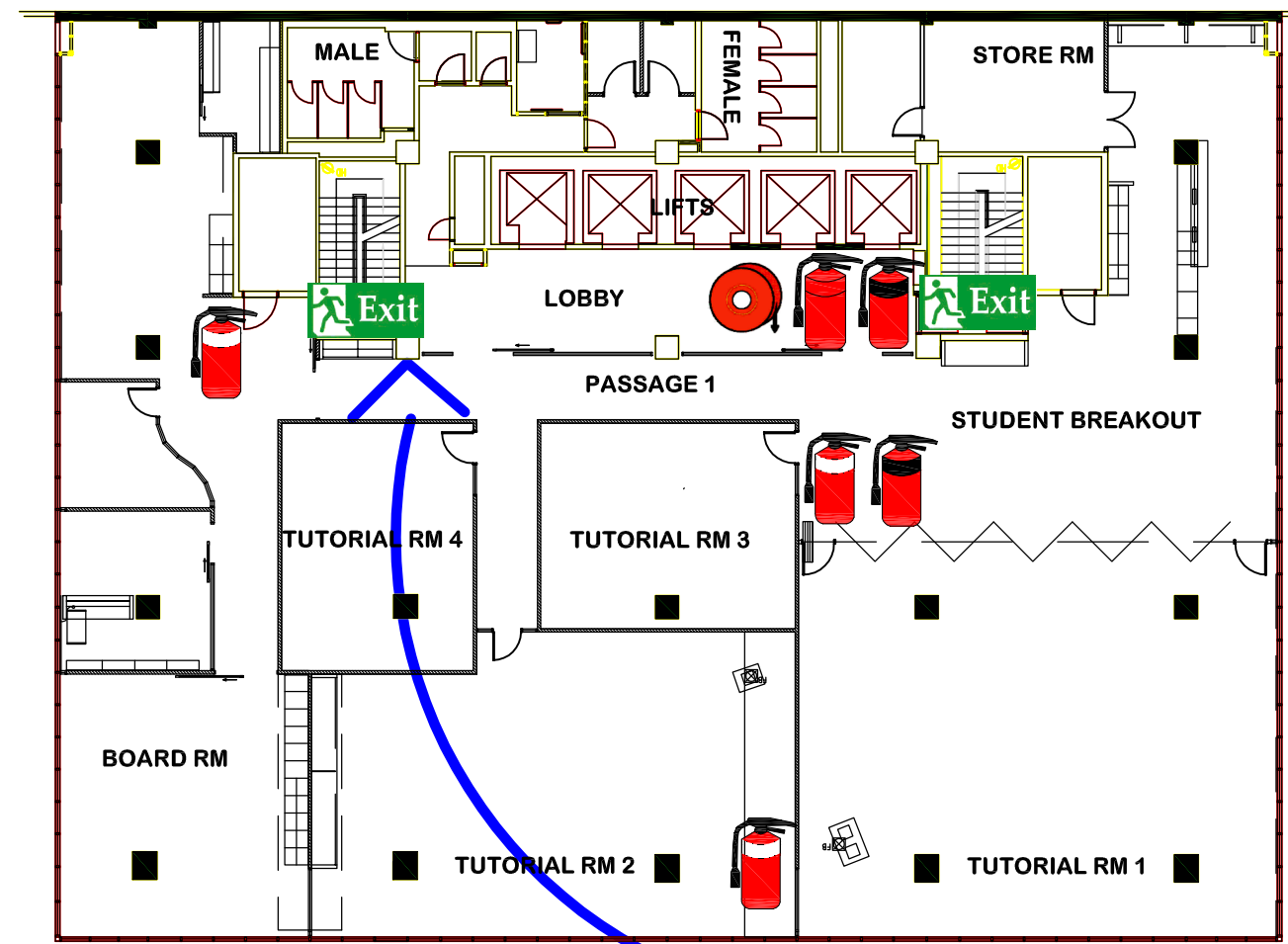
#### KEY

-  AIR WATER EXTINGUISHER
-  CO2 EXTINGUISHER
-  DRY CHEMICAL EXTINGUISHER
-  FIRE HOSE REEL
-  EMERGENCY EXIT
-  ASSEMBLY AREA
-  FIRE BLANKET

DRAWING DATE 7/08/2011

IN THE EVENT OF EITHER WARNING SIGNAL  
SOUNDING OUTSIDE OF NORMAL WORKING  
HOURS ALL OCCUPANTS SHOULD EVACUATE  
IMMEDIATELY

IN THE EVENT OF FIRE ALARM DO NOT USE LIFTS



YOU ARE HERE

FLINDERS STREET

VICTORIA SQUARE

ASSEMBLY  
AREA  
ADJACENT  
STATUE NORTH  
EAST CORNER  
VICTORIA SQ